



# LSI GROUP

Creating Value,  
Partners in Growth.



# ABOUT US

"25 years ago, we started our journey. Today, with 150 team members, we continue to uphold integrity and commitment, adding value to create world-class companies across sectors, especially infrastructure, mining, and renewable energy. With unwavering resolve and expertise in financial prudence, we are proud to contribute to making our nation the third-largest economy in the world."

## *Our Group Companies*

**LSI FINANCIAL SERVICES PRIVATE LIMITED**

**LSI ENGINEERING & CONSULTANTS LIMITED**

**LSI RESOLUTION PRIVATE LIMITED**

**RESOLUTE VALUERS & CONSULTANTS PRIVATE LIMITED**

# MESSAGE FROM FOUNDER



**Rajya V Kajaria**  
*Founder*

At LSI, we believe in the power of integrity, experience, relationships, and knowledge. These pillars form the foundation of our approach to every client interaction and solutions we provide. With two decades of experience, our team, led by seasoned professionals with over 40 years of experience in industries, delivers unmatched expertise and multiple insights. Our strong relationships with clients, banks, and lenders are built on trust, transparency, and timely delivery. Moreover, our relentless pursuit of knowledge through research-driven initiatives has enabled us to stay at the forefront of the industry.

As we look ahead, we remain steadfast in our commitment to being client-centric and providing optimal solutions in all fields, domestically and internationally. Our geographical presence across important Metros and Tier-II cities in India ensures seamless coordination and personalized service for every client. We are not just consultants but partners in growth, dedicated to creating lasting value for our clients and contributing to our nation's economic prosperity and beyond.



## EXPERIENCE

Over the past 25 years, we have found endless inspiration in the challenges and opportunities across diverse sectors. Our eminent team leaders, enriched with vast experience of 40+ years in advisory services, instill confidence in our clients.

## KNOWLEDGE

Our work has been research-driven and focused on Techno Economic Viability (TEV)/ Lenders' Independent Engineer (LIE)/ Agency for Specialized Monitoring (ASM) fields, with projects in the Infrastructure, Power, Metals, Mining, and Manufacturing sectors to enhance our knowledge and industry expertise.

## INTEGRITY

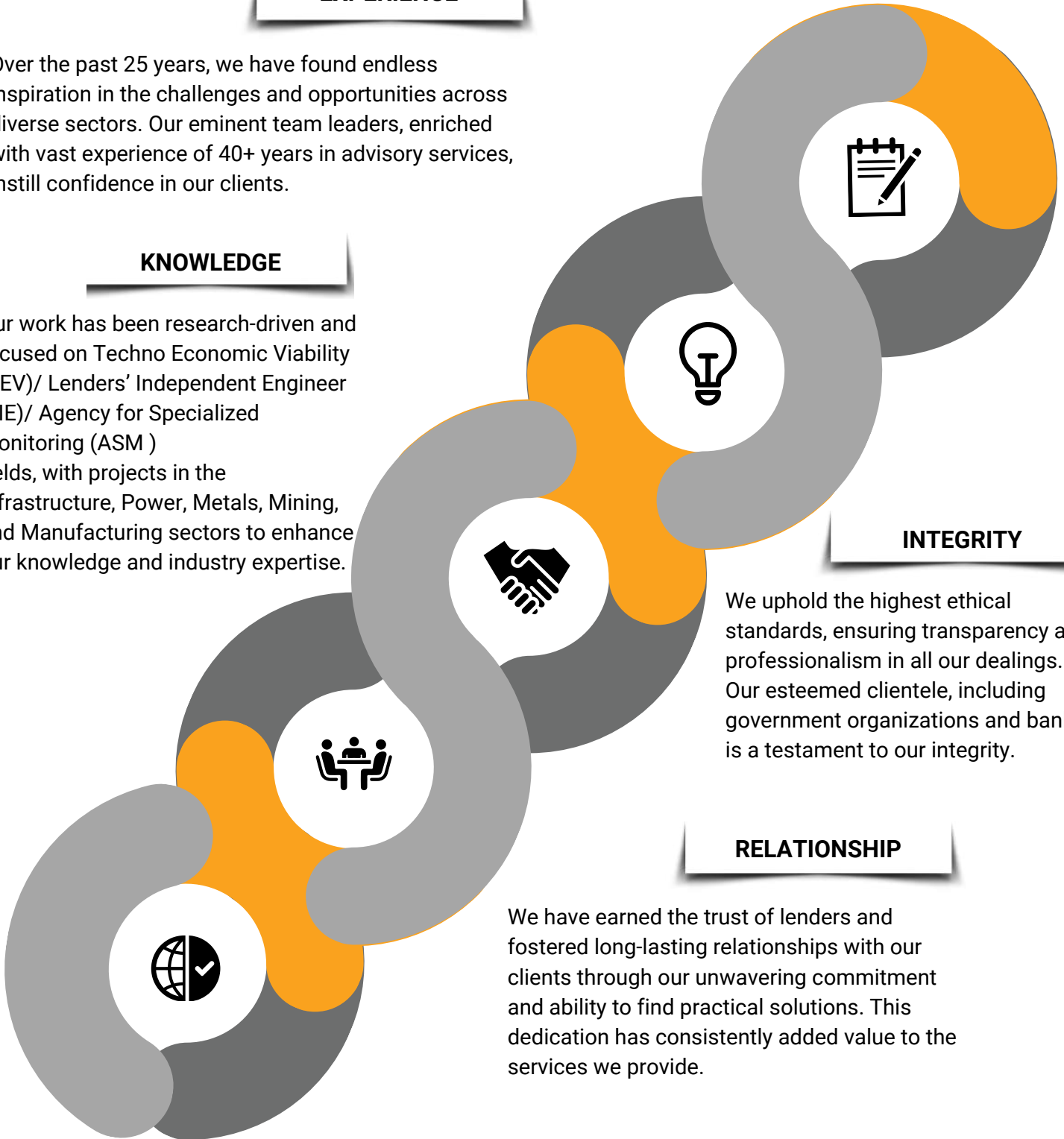
We uphold the highest ethical standards, ensuring transparency and professionalism in all our dealings. Our esteemed clientele, including government organizations and banks, is a testament to our integrity.

## RELATIONSHIP

We have earned the trust of lenders and fostered long-lasting relationships with our clients through our unwavering commitment and ability to find practical solutions. This dedication has consistently added value to the services we provide.

## PRESENCE

Our geographical presence in metropolitans and Tier-1 and Tier-2 cities in India allows us to coordinate smoothly with clients and lenders while executing assignments.



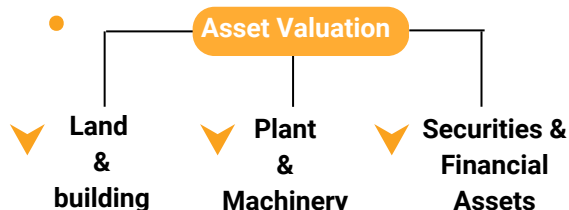
# OUR SERVICES



## FINANCIAL

- Advisory Services for Debt
- Financial Due Diligence
- Transaction Advisory
- Resolution Plan / Support Services
- Mergers & Acquisitions
- Process Advisory Services
- Agency for Specialized Monitoring (ASM)
- Enterprise Valuation
- Valuation of Brand & Intangible Assets
- Valuation of Merger/Demerger

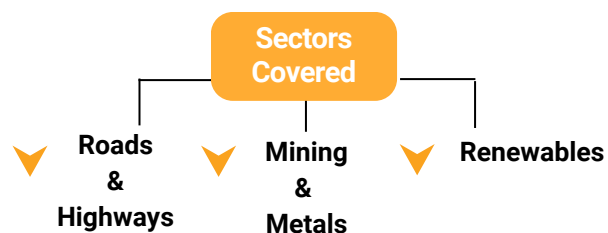
- Financial & Technical Appraisal
- Detailed Project Report Preparation
- Techno Economic Viability (TEV)
- Lenders Independent Engineering (LIE)
- Technical Due Diligence



- Purchase Price Allocation
- Industry Reports



## TECHNO COMMERCIAL



## TECHNCAL

- Contract Progress & Performance Monitoring
- Bid Advisory
- Feasibility Studies & Detailed Project Report (DPR)
- End to End Project Management Services (PMC/PMU))
- Market Assessment & Strategy
- Engineering Services (Basic / Detailed Designs)
- Operational & Process Improvement



# OUR EMPANELMENTS

## BANKS



## OUR GOVERNMENT CLIENTS

## FINANCIAL INSTITUTIONS & PSU UNDERTAKINGS

- Orissa Minerals Development Company Limited (OMDC)
- Damodar Valley Corporation (DVC)
- Bharat Coking Coal Limited (BCCL)
- Bharat Heavy Electricals Limited (BHEL)
- Madhya Pradesh Consultancy Organization Limited (MPCON)
- Rural Electrification Corporation Limited (REC)
- Food Corporation of India (FCI)
- Haldia Petrochemicals Limited (HPL)
- Andhra Pradesh Industrial Infrastructure Corporation Limited (APIIC)
- National Newsprint and Paper Mills Limited (NEPA)
- Rashtriya Ispat Nigam Limited (RINL)
- PDCOR Limited
- Kamarajar Port Limited (KPL)
- National Projects Construction Corporation Limited (NPCC)
- Central Coalfields Limited (CCL)
- Project and Equipment Corporation of India Limited (PEC)
- Eastern Coalfields Limited (ECL)
- National Highways Authority of India (NHAI)
- Indian Oil Corporation limited (IOCL)
- Power Grid Corporation of India limited (PGCIL)
- Central Mine Planning and Design Institute (CMPDI)
- India Optel Limited
- Indian Railway Finance Corporation (IRFC)
- West Bengal Industrial Infrastructure Development Corporation (WBIIDC)
- West Bengal Infrastructure Development Finance Corporation Ltd. (WBIDFC)
- Durgapur Chemicals Limited (DCL)
- The Durgapur Projects Limited (DPL)
- West Bengal Housing Board (WBHB)
- Telecommunications Consultants India Ltd. (TCIL)
- Power Finance Corporation (PFC)

- Department of Tourism, Uttar Pradesh
- Invest UP, Govt. of Uttar Pradesh
- Asset Reconstruction Company (India) Ltd. (ARCIL)
- Tamil Nadu Infrastructure Development Board (TNIDB)
- Omkara Asset Reconstruction Company (ARC)
- SICOM Limited
- Vistra ITCL India Limited
- Tata Capital
- PFC Consulting Limited (PFCL)
- The Pradeshiya Industrial & Investment Corporation Limited (PICUP)
- India Infrastructure Finance Company Ltd (IIFCL)
- Finance Department Govt. of West Bengal
- North Eastern Development Finance Corporation Ltd. (NEDFI)
- National Agricultural Cooperative Marketing Federation Of India Ltd. (NAFED)
- National Stock Exchange (NSE)
- National Asset Reconstruction Company Ltd. (NARCL)
- Metal Scrap Trade Corporation Limited (MSTC)
- Indian Renewable Energy Development Agency (IREDA)
- Indian Ports Association (IPA)

# OUR TIE-UPS



**Vessels Value Ltd I**  
Great Britain



**GESVALT Sociedad**  
De Tasacoib SA,  
Spain



**Gherzi AG**  
Zurich, Switzerland



**Bloom**  
Infrastructure &  
Logistics Pvt. Ltd.  
Milwaukee, USA



**DMS Mining Consulting**



**ZERO NEXUS,**  
Canada



# ADVISORY PANEL

Our Mentors has been pivotal to the LSI Group's progress, providing strategic guidance and valuable insights. Their collective experience and expertise enable us to deliver innovative solutions and stay ahead of market trends.



## **Partha S Bhattacharyya**

Former Chairman, Coal India Ltd.;  
40 years of professional expertise.



## **Pratip Chaudhari**

Former Chairman of SBI;  
45 years of banking experience.



## **V K Srivastava**

Former MD. Steel Authority of India Limited;  
Over 40 years of experience in Steel and Power Sector.



## **S K Sinha**

Former Executive Director at Power Grid Corporation Limited;  
Former Managing Director at Teestavalley Power Transmission Limited.



## **Arvind Kumar**

Director Technical (retd.) Board;  
Member MECL, former ED/Coal Business; Mining Expert.





Our leadership is the cornerstone of our success. With seasoned leaders who possess rich knowledge and proficiency in the industry, we guarantee that our operations are in capable hands.



**V S Modi**

**Whole time Director**

Having more than fifty years of experience in the fields of finance & legal matters in various corporate houses in India.



**B D Agarwal**

**Director**

Finance expert, Skilled at Corporate Finance and Business Planning



**A N Dhar**

**Director**

Former GM, SBI with more than 38 yrs of experience in retail & wholesale banking including forex with great exposure in credit & operational risk.



**Asis Bhattacharjee**

**President**

Ex DGM, SBI with more than 45 yrs of experience in core finance, banking & business finance management.



**Rohit Jain**

**Joint Managing Director (Services)**

A chartered accountant with more than 18 yrs of experience in corporate finance, debt restructuring, insolvency advisory, mergers & acquisitions & management consulting.



**Anshuman Nathany**

**Joint Managing Director (Corporate Finance)**

Finance professional with over 30 yrs experience in debt restructuring, mergers & acquisitions, financial advisory, and bankruptcy law.



**Debasis Bhattacharya**

**Managing Director (Valuations)**

A registered valuer & insolvency professional with over 40 yrs of corporate experience in core finance and valuation & management of insolvency proceedings of stressed assets in infrastructure & other sectors.



**Asim Tewari**

**Joint Managing Director (Road/Tunnel)**

Experienced P3 infrastructure development professional in road concessions; over 33 years of experience in infrastructure and real estate projects



**Praveen Mishra**

**Joint Managing Director (Coal & Metal/ Mining)**

Ex-Director PwC, Ex-Arcelor Operations, PMU, and Strategy Expert; over 20 yrs of experience in Mining, Operations, and Strategy



**Ajeet Mishra**

**Joint Managing Director (Renewables)**

Electrical engineer with more than 15 yrs experience in renewable energy industry, worked with market leaders like Azure and Hero.



Road

76

Healthcare

47

Real Estate

133

Metals & Mining

228

# DOMAIN EXPERTISE

Completed Assignments

190

Energy & Power

Infrastructure

287

Manufacturing

711

Hospitality

32

# LSI FINANCIAL SERVICES PVT. LTD.

LSI Financial Services Pvt. Ltd. was established in 1997 and is a SEBI-Registered Category 1 Merchant Banker. The company's vision is to provide services relating to Project Finance Advisory, Techno Economic Viability Study, Financial Restructuring and Asset & Equity Valuation to esteemed Financial Institutions and Corporate houses. With senior ex-bankers and eminent industry experts supported by 150 professionals in the team, the company has gathered vast experiences in almost all the sectors in the past 25 years.

LSI has empowered more than 200 large corporate houses in India with its suite of financial solutions. Today, LSI is present in the country's major cities.

We have successfully completed more than 100 debt division projects, 500 TEV/LIE projects, 25 merchant banking projects, and 750 project appraisals, including land appraisal.

## OUR SERVICES

We provide financial solutions for corporate clients, optimizing their strategy and capital structure to benefit stakeholders. Our services include:

### Advisory for Debt



Our team delivers optimal funding solutions, ensures timely arrangements and secures favourable terms for our clients.

### M&A Assistance:



Expertise in buy-side and sell-side advisory services for mergers & acquisitions.

### Resolution Plan Advisory



Advisory & preparation of Resolution Plan for acquisition through the IBC Process

### Financial Due Diligence



Evaluates the financial health of the business in order to identify any risks and improve decision-making.

### Advisory for Restructuring



Advising clients on restructuring debt under RBI schemes to improve financial health.

### TEV Studies & DPR:



We conduct Techno - Economic Viability (TEV) studies and prepare Detailed Projects Reports (DPR)

### Monitoring Agency



Monitoring the operations of the borrowers to track and identify the utilisation of the borrowed funds.

### Project Appraisal:



Acting as a project appraisal agency for PSUs and various Govt. sponsored schemes

# RESOLUTE VALUERS & CONSULTANTS PVT. LTD.

Resolute Valuers & Consultants Pvt Ltd. is a key player in Valuation. Its efficient and experienced team comprises of Registered Valuers, Technical Experts, Domain Experts, Experienced Chartered Engineers, Chartered Accountants, Cost Accountants, Senior Bankers etc.

It is registered with IBBI as a Valuation Entity to carry out Valuations of all classes of assets, i.e., Land and Buildings, Plant and Machinery and Securities and Financial Assets. It has undertaken valuations of very large infrastructure and manufacturing companies. The company has also participated in valuations under disinvestment program of Govt. of India.

## OUR 360 DEGREE APPROACH FOR VALUATION



In our endeavor to ascertain the right value of the Assets, we go beyond the basic / usual procedure of valuation based on age and conditioning assessment and look at 360° for all other factors which could have some impact on the valuation of the subject Assets.

In our 360° Valuation Approach, we carry out the assessment of and look at the impact of the factors mentioned in the image.

we also look into and factor-in the impact of additional Sector Specific Features/Parameters while carrying out the valuations related to Industries of those sectors.

## OUR SERVICES

### Tangible Asset Valuation:



Land & Building, Plant & Machinery, Securities, and Financial assets.

### Intangible Asset Valuation:



Brand Valuation, Intellectual properties etc.

### Business & Equity Valuation:



Including Equity Valuation for New Issues, Transfers, Buy Back, and Income Tax purposes.

### Valuation for Resolution & Liquidation:



Under NCLT (Insolvency and Bankruptcy Board of India).

### Mergers/ Acquisition Valuation:



Compliance with the Companies Act.

**Track Record: Successfully completed multiple high-value assignments for Banks, Financial Institutions and Corporates, valuing assets worth over Rs. 7,50,000 Cr.**

# LSI RESOLUTION PVT. LTD.

LSI Resolution Pvt Ltd offers a spectrum of services related to the Insolvency and Bankruptcy Code (IBC 2016), enacted to provide the legal and legislative framework to support lenders effectively to revive corporate debtors through resolution in a time-bound manner.

As an IBBI registered Insolvency Professional Entity, the company has supported insolvency professionals to successfully manage & complete more than 30 corporate insolvency resolution processes of large companies across India in various sectors.

LSI Resolution is also registered to act as an insolvency professional.

LSI Resolution Pvt Ltd. acts as Insolvency Professional (IP) and Insolvency Professional Entity (IPE) with the support of a team which includes Chartered Accountants, Cost Accountants, Advocates, Valuers, Engineers, Project Consultants to make an efficient resolution process.



### Diverse Expertise

We are recognized as an Insolvency Professional (IP) and Insolvency Professional Entity (IPE). Our team includes Finance /Industry Experts, Engineers and other professionals to ensure smooth functioning of the Corporate Debtor.



### Resolution Process

Manage the entire process of CIRP, representing the interests of creditors, analyzing financial statements, managing the resolution plan process and coordinating between stakeholders.



### Liquidation Process

We provide support services to the liquidator in order to enhance the lenders' recovery and streamline the asset sale process through bid process management.



### Process Advisory

We provide advisory services to the RP/ Liquidator / Committee of Creditors/ Stakeholders Consultation Committee, ensuring that the process follows all legal norms & regulations, including identifying potential investors.



# LSI ENGINEERING & CONSULTANTS LTD.

A group of Passionate, Highly Skilled & Seasoned infrastructure development professionals have partnered with LSI Group to establish LSI Engineering & Consultants Limited in 2010.

LSI Engineering & Consultants Limited has built a robust pan-India presence in a short time for clients like NHAI, MORTH, and Leading Banks and Financial Institutions.

LSI Engineering & Consultants Limited has a strong team of experienced Engineers & Business Advisors with domain knowledge in nearly all sectors of Infrastructure.



We offer various services, including strategy consulting, organizational development, digital transformation, project management, feasibility studies, financial advisory, project monitoring, and infrastructure management.

Our expertise spans various sectors such as transportation, metals and mining, infrastructure, renewable energy, and more. With a dedicated team of professionals, we ensure the successful execution of projects and strive for client satisfaction.

# ROADS & INFRASTRUCTURE - BUSINESS UNIT



**Roads & Highways & Expressways**



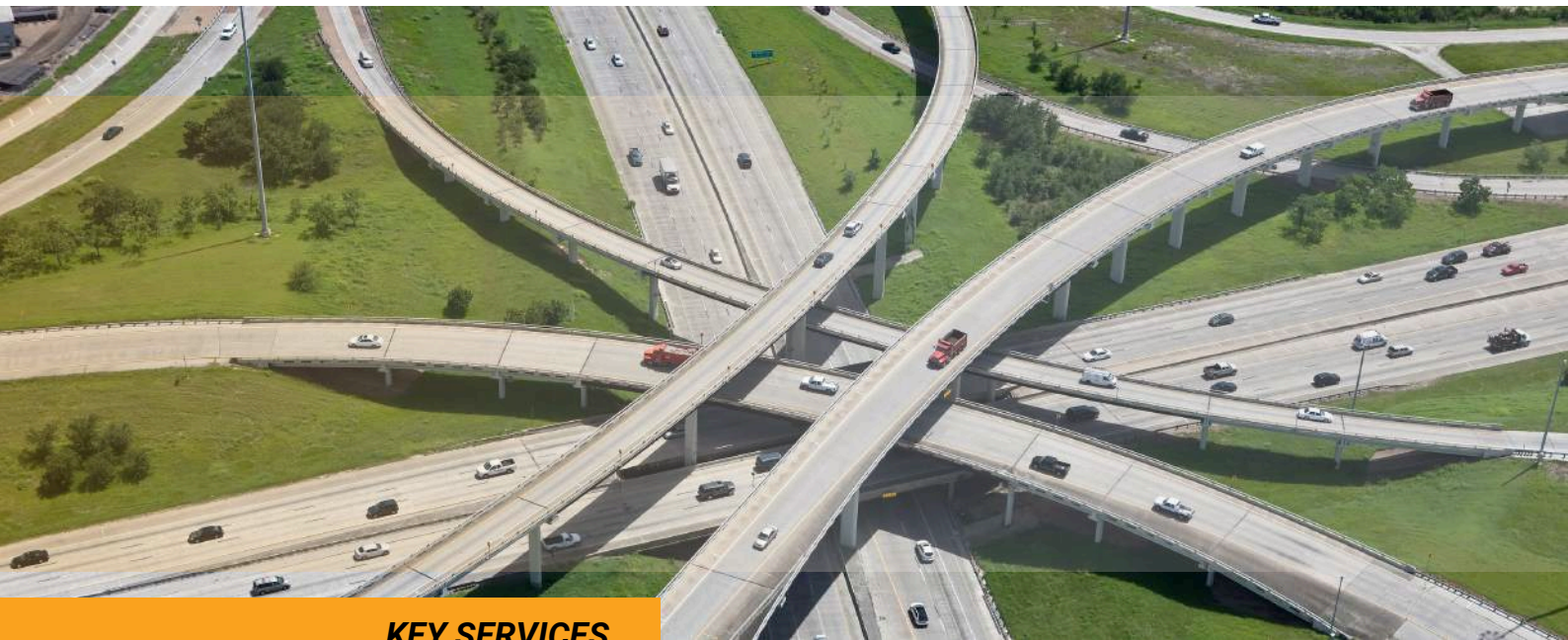
**Railways**



**Urban Development**



**Institutional Campus**



## KEY SERVICES

**Strategy & Business Transformation Advisory**

**Digital Transformation**

**Contract Management**

**Operations & Maintenance Management**

**Pre-Feasibility/Feasibility/Design/Detailed Project Report**

**Project Management**

**ASM/LIE**

**Strategic & Policy Advisory**

**ITS for Design & Project Management**

# METALS & MINING - BUSINESS UNIT



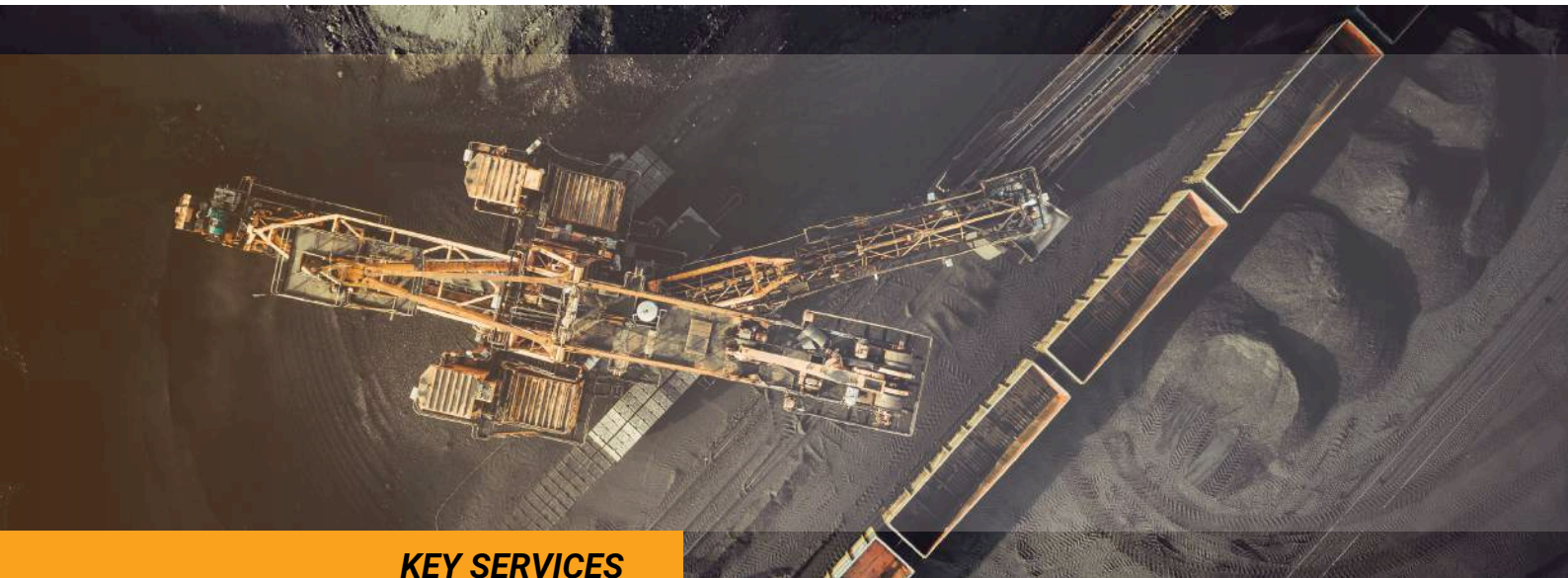
**Coal**



**Metals**



**Critical & Other Minerals**



## KEY SERVICES

<b>End-to-End Project Management Services</b>	<b>Process Optimization &amp; Operational Improvements</b>	<b>Skill Gap Assessment &amp; Upskilling</b>
<b>Due Diligence of Assets- Technical and Commercial</b>	<b>Auction Support Services- Coal, Minerals and Critical Minerals</b>	<b>Market Strategy Development</b>
<b>Basic &amp; Detailed Engineering Designing and Services for Plants</b>	<b>Procurement &amp; Transaction Advisory</b>	<b>Environmental, Social, and Governance (ESG) Strategy and Studies, EIA/EMP and Environment Management</b>

## Technical Consulting

- Geology- Mineral Exploration and Mineral Resource Governance
- Mine Planning and Designing
- Mineral Processing
- Pre-Feasibility and Feasibility Studies
- Detailed Project Report (DPR) Preparation



# SOLAR & OTHER RENEWABLES - BUSINESS UNIT



## KEY SERVICES


Project Management Consultancy (PMC)	Technical Consulting & DPRs	Technical Due Diligence & Health Checkups
<ul style="list-style-type: none"> <li>• Engineering Review</li> <li>• Procurement Services</li> <li>• Construction Monitoring</li> </ul>	<ul style="list-style-type: none"> <li>• Energy Yield Assessment</li> <li>• Feasibility Study</li> <li>• Detailed Project Report</li> </ul>	<ul style="list-style-type: none"> <li>• Design Review</li> <li>• O&amp;M Practice Review</li> <li>• Health Test and more</li> </ul>

Owner's Engineering	TEV & LIE	Mergers & Aquisition Services
<ul style="list-style-type: none"> <li>• Project Planning</li> <li>• Quality Assurance</li> <li>• Timeline and Cost Management</li> <li>• Performance Testing</li> </ul>	<ul style="list-style-type: none"> <li>• Technical Feasibility Study</li> <li>• Cost Benchmarking</li> <li>• Generation/PLF Vetting</li> </ul>	<ul style="list-style-type: none"> <li>• Technical &amp; Financial due diligence</li> <li>• Scouting for buyers/seller</li> <li>• Transaction advisory</li> </ul>

# OUR OFFICES

**Kolkata**

104, S. P. Mukherjee Road,  
Sagar Trade Cube,  
Kolkata – 700026

 033 2486 3815/16/17


**Delhi**

1205, Chiranjiv Tower,  
43, Nehru Place,  
New Delhi-110019

 011 46628819/17


**Mumbai**

506/507, Madhava, E – Block,  
Bandra Kurla Complex,  
Bandra East  
Mumbai-400051

 022 49713684

**Hyderabad**

301, Sri Brundavanam Residency,  
Patrika Nagar, 2nd Line,  
Madhpur


 Hyderabad-500081  
09959466634






**Creating Value,  
Partners in Growth.**



 [corporate@lsimails.com](mailto:corporate@lsimails.com)

 Follow LSI\_GR on X

 [www.lsigroup.in](http://www.lsigroup.in)

 Follow LSI Group on LinkedIn